

STRONG BOX ROLL-OFF CONTAINER



Subsidiary of Federal Signal Corporation

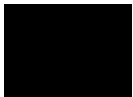
SPECIFICATIONS

FLOOR SHEET	3/16" BUTT WELDED
CROSSMEMBERS	3" STRUCTURAL CHANNEL 4.1 LBS/FT 17.5" ON CENTERS
LONG RAILS	2" X 6" X 1/4" TUBING
FRONT WHEELS	8" DIAMETER X 6" WIDE <i>WITH GREASE ZERK</i> <i>(FRONT WHEELS STANDARD ONLY ON CABLE)</i>
REAR WHEELS	8" DIAMETER X 10" WIDE <i>WITH GREASE ZERK</i>
SIDE SHEET	12 GAUGE
SIDE POSTS	3" X 5" FORMED 24" ON CENTERS
TARP RAIL	5/8" ROUND BAR
TOP RAILS	3" X 4" X 7 GAUGE TUBING
BULKHEAD SHEET	10 GAUGE
PUSH PLATE	26" X 16" X 3/16"
BULL NOSE	SOLID 1 1/4" PLATE BURNOUT
NOSE ROLLERS	HEAVY DUTY MACHINED 4" DIAMETER X 6" <i>WITH GREASE ZERK</i>
HOOK PLATE	23" X 15" X 3/4"
TAIL GATE SHEET	10 GAUGE
TAIL GATE FRAME	VERTICAL 3" X 4" X 7 GAUGE TUBING
REAR CORNER POST	3 1/2" X 7" X 3/16" FORMED
HINGES	HEAVY DUTY <i>WITH GREASE ZERK</i> <i>(THREE ON 54" OR HIGHER SIDES EXCEPT FOR BARN DOORS)</i>
LATCHES	VERTICAL LIFT HANDLE
PAINT	INTERIOR/EXTERIOR SOLVENT BASED PRIME EXTERIOR SOLVENT BASED TOP COAT <i>(COMPLETE PAINT OPTION AVAILABLE)</i>



STANDARD PAINT COLORS

BLACK



BUCKS® RED



MACK GREEN



VALVOLINE BLUE



Custom colors may result in increased cost and lead times.



BO46.2211

CONTAINER OPTIONS

Options may result in increased cost and lead times.



DUMP GATE



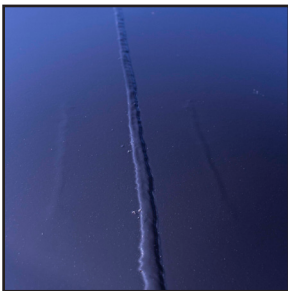
DUMP/SIDE SWING GATE



DUAL HOOK-UP



TARP (MANY STYLES AVAILABLE)



FULLY WELDED



SIGN PLATES

STANDARD DIMENSIONS

Containers can be manufactured to customer specified dimensions and may result in increased costs and lead times.

<u>Yardage</u>	<u>Floor Length</u>	<u>Inside Height</u>	<u>Width</u>	<u>Estimated Weight</u>
10	12'	42"	96" Outside, 88" Inside	3100 lbs
12	12'	48"	96" Outside, 88" Inside	3300 lbs
15	14'	48"	96" Outside, 88" Inside	3600 lbs
20	22'	42"	96" Outside, 88" Inside	4900 lbs
25	22'	52"	96" Outside, 88" Inside	5200 lbs
30	22'	62"	96" Outside, 88" Inside	5600 lbs
35	22'	72"	96" Outside, 88" Inside	5800 lbs
40	22'	82"	96" Outside, 88" Inside	6200 lbs
45	22'	92"	96" Outside, 88" Inside	6500 lbs