

# CHIPPER STYLE ROLL-OFF CONTAINER



## SPECIFICATIONS

FULL WELD	INTERIOR/EXTERIOR
FLOOR SHEET	3/16" BUTT WELDED
CROSSMEMBERS	3" STRUCTURAL CHANNEL 4.1 LBS/FT 17.5" ON CENTERS
LONG RAILS	2" X 6" X 1/4" TUBING
FRONT WHEELS	8" DIAMETER X 6" WIDE <i>WITH GREASE ZERK</i> (FRONT WHEELS STANDARD ONLY ON CABLE)
REAR WHEELS	8" DIAMETER X 10" WIDE <i>WITH GREASE ZERK</i>
SIDE SHEET	12 GAUGE
SIDE POSTS	3" X 5" FORMED 24" ON CENTERS
TARP RAIL	5/8" ROUND BAR
TOP RAILS	3" X 4" X 7 GAUGE TUBING
BULKHEAD SHEET	10 GAUGE
PUSH PLATE	26" X 16" X 3/16"
BULL NOSE	SOLID 1 1/4" PLATE BURNOUT
NOSE ROLLERS	HEAVY DUTY MACHINED 4" DIAMETER X 6" <i>WITH GREASE ZERK</i>
HOOK PLATE	23" X 15" X 3/4"
TAIL GATE SHEET	10 GAUGE
TAIL GATE FRAME	VERTICAL 3" X 4" X 7 GAUGE TUBING
REAR CORNER POST	3 1/2" X 7" X 3/16" FORMED
HINGES	HEAVY DUTY <i>WITH GREASE ZERK</i> (THREE ON 54" OR HIGHER SIDES EXCEPT FOR BARN DOORS)
LATCHES	VERTICAL LIFT HANDLE
ROOF	22" TALL, 12GA CHIPPER STYLE ROOF
PAINT	COMPLETE PRIME/PAINT



### STANDARD PAINT COLORS

BLACK



BUCKS® RED



MACK GREEN



VALVOLINE BLUE



*Custom colors may result in increased cost and lead times.*

# CONTAINER OPTIONS

*Options may result in increased cost and lead times.*



BARN DOORS



DOUBLE SIDE SWING GATE



DUMP GATE



RECESSED A-FRAME



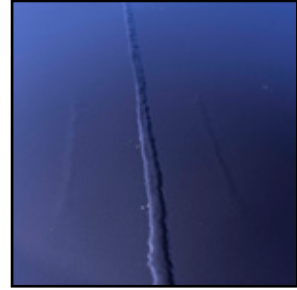
D-RINGS



REMOVABLE ROOF



DUAL HOOK-UP



FULLY WELDED

## STANDARD DIMENSIONS

*Containers can be manufactured to customer specified dimensions and may result in increased costs and lead times.*

Floor Length  
8' -40'

Bulkhead Height  
24"-72"

Width  
96" Outside, 88" Inside

*\*CONTAINERS CAN BE MANUFACTURED TO CUSTOMER SPECIFIED DIMENSIONS\**