

DEWATERING ROLL-OFF CONTAINER



SPECIFICATIONS

FLOOR SHEET	3/16" BUTT WELDED
CROSSMEMBERS	3" STRUCTURAL CHANNEL 4.1 LBS/FT 16" ON CENTERS
LONG RAILS	2" X 6" X 1/4" TUBING
FRONT WHEELS	8" DIAMETER X 6" WIDE <i>WITH GREASE ZERK (FRONT WHEELS STANDARD ONLY ON CABLE)</i>
REAR WHEELS	8" DIAMETER X 10" WIDE <i>WITH GREASE ZERK</i>
SIDE SHEET	10 GAUGE
SIDE POSTS	3" X 5" FORMED 24" ON CENTERS
TARP RAIL	5/8" ROUND BAR
TOP RAILS	3" X 4" X 7 GAUGE TUBING
BULKHEAD SHEET	10 GAUGE
PUSH PLATE	26" X 16" X 3/16"
BULL NOSE	SOLID 1 1/4" PLATE BURNOUT
NOSE ROLLERS	HEAVY DUTY MACHINED 4" DIAMETER X 6" <i>WITH GREASE ZERK</i>
HOOK PLATE	23" X 15" X 3/4"
TAIL GATE SHEET	10 GAUGE
TAIL GATE FRAME	3" X 4" X 7 GAUGE TUBING
REAR CORNER POST	3 1/2" X 7" X 3/16" FORMED
HINGES	HEAVY DUTY SLIDER STYLE <i>WITH GREASE ZERK (THREE ON 54" OR HIGHER SIDES)</i>
LATCHES	VERTICAL LIFT HANDLE
DEWATERING FEATURE	REMOVABLE BASKET, (2) PIPE AND NIPPLE CAPS ON GATE CHOOSE FROM PERFORATED SIDES AND/OR FLOOR, AND 10GA OR 7GA PERFORATED STEEL
PAINT	INTERIOR/EXTERIOR SOLVENT BASED PRIME EXTERIOR SOLVENT BASED TOP COAT <i>(COMPLETE PAINT OPTION AVAILABLE)</i>



STANDARD PAINT COLORS

BLACK



BUCKS® RED



MACK GREEN



VALVOLINE BLUE



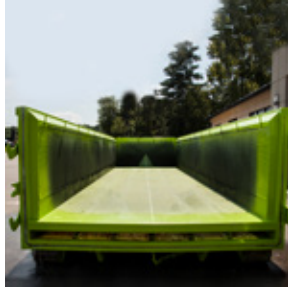
Custom colors may result in increased cost and lead times.

CONTAINER OPTIONS

Options may result in increased cost and lead times.



SPLASH PLATES



FALSE FLOOR



SEALED DUMP GATE



FITTINGS
(MANY STYLES AVAILABLE)



LINER HOOKS



EPOXY COATING



DUAL HOOK-UP



TARP *(MANY STYLES AVAILABLE)*

STANDARD DIMENSIONS

Containers can be manufactured to customer specified dimensions and may result in increased costs and lead times.

<u>Yardage</u>	<u>Floor Length</u>	<u>Inside Height</u>	<u>Width</u>
10	12'	42"	96" Outside, 88" Inside
12	12'	48"	96" Outside, 88" Inside
15	14'	48"	96" Outside, 88" Inside
20	22'	42"	96" Outside, 88" Inside
25	22'	52"	96" Outside, 88" Inside
30	22'	62"	96" Outside, 88" Inside
35	22'	72"	96" Outside, 88" Inside
40	22'	82"	96" Outside, 88" Inside

Basket Decreases Inside Width