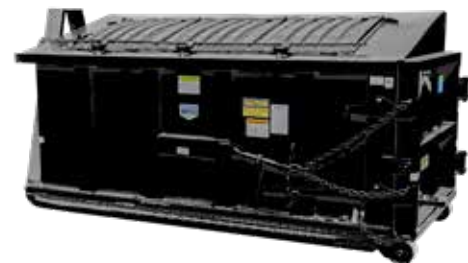


RECYCLING ROLL-OFF CONTAINER



SPECIFICATIONS

FLOOR SHEET	3/16" BUTT WELDED
CROSSMEMBERS	3" STRUCTURAL CHANNEL 4.1 LBS/FT 17.5" ON CENTERS
LONG RAILS	2" X 6" X 1/4" TUBING
FRONT WHEELS	8" DIAMETER X 6" WIDE <i>WITH GREASE ZERK (FRONT WHEELS STANDARD ONLY ON CABLE)</i>
REAR WHEELS	8" DIAMETER X 10" WIDE <i>WITH GREASE ZERK</i>
SIDE SHEET	12 GAUGE
SIDE POSTS	3" X 5" FORMED 24" ON CENTERS
TOP RAILS	3" X 4" X 7 GAUGE TUBING
BULKHEAD SHEET	10 GAUGE
PUSH PLATE	26" X 16" X 3/16"
BULL NOSE	SOLID 1 1/4" PLATE BURNOUT
NOSE ROLLERS	HEAVY DUTY MACHINED 4" DIAMETER X 6" <i>WITH GREASE ZERK</i>
HOOK PLATE	23" X 15" X 3/4"
TAIL GATE SHEET	10 GAUGE
TAIL GATE FRAME	VERTICAL 3" X 4" X 7 GAUGE TUBING
REAR CORNER POST	3 1/2" X 7" X 3/16" FORMED
HINGES	HEAVY DUTY <i>WITH GREASE ZERK (THREE ON 54" OR HIGHER SIDES)</i>
LATCHES	VERTICAL LIFT HANDLE
ROOF	PER CUSTOMER REQUEST
LIDS	DOUBLE WALL POLY, SLIDING OR HINGED
PAINT	INTERIOR/EXTERIOR SOLVENT BASED PRIME EXTERIOR SOLVENT BASED TOP COAT <i>(COMPLETE PAINT OPTION AVAILABLE)</i>



STANDARD PAINT COLORS

BLACK



BUCKS® RED



MACK GREEN



VALVOLINE BLUE



Custom colors may result in increased cost and lead times.

CONTAINER OPTIONS

Options may result in increased cost and lead times.



SLIDING LIDS



HINGED LIDS



SEALED GATE



INTERIOR DIVIDER(S)



PEAK ROOF



FLAT ROOF



HIP ROOF



CARDBOARD SLOT(S)

STANDARD DIMENSIONS

Containers can be manufactured to customer specified dimensions and may result in increased costs and lead times.

<u>Yardage</u>	<u>Floor Length</u>	<u>Inside Height</u>	<u>Width</u>
10	12'	42"	96" Outside, 88" Inside
12	12'	48"	96" Outside, 88" Inside
15	14'	50"	96" Outside, 88" Inside
20	22'	42"	96" Outside, 88" Inside
25	22'	52"	96" Outside, 88" Inside
30	22'	62"	96" Outside, 88" Inside
35	22'	72"	96" Outside, 88" Inside
40	22'	82"	96" Outside, 88" Inside
45	22'	92"	96" Outside, 88" Inside
50	24'	96"	96" Outside, 88" Inside
55	26'	96"	96" Outside, 88" Inside
60	28'	96"	96" Outside, 88" Inside

ROLL-OFFS THAT WORK AS HARD AS YOU DO.