

# TOUGH BOX ROLL-OFF CONTAINER



Subsidiary of Federal Signal Corporation

## SPECIFICATIONS

FLOOR SHEET	3/16" BUTT WELDED
CROSSMEMBERS	3" STRUCTURAL CHANNEL 4.1 LBS/FT 24" ON CENTERS
LONG RAILS	2" x 6" x 3/16" TUBING
REAR WHEELS	8" DIAMETER x 10" WIDE <i>WITH GREASE ZERK</i>
SIDE SHEET	12 GAUGE
SIDE POSTS	3" x 5" FORMED 24" ON CENTERS
TARP RAIL	5/8" ROUND BAR
TOP RAILS	3" x 3" x 1/8"
BULKHEAD SHEET	12 GAUGE
PUSH PLATE	26" x 16" x 3/16"
BULL NOSE	SOLID 1 1/4" PLATE BURNOUT
NOSE ROLLERS	HEAVY DUTY MACHINED 4" DIAMETER x 6" <i>WITH GREASE ZERK</i>
HOOK PLATE	23" x 15" x 3/4"
TAIL GATE SHEET	12 GAUGE
TAIL GATE FRAME	VERTICAL 3" x 3" x 11 GAUGE TUBING
REAR CORNER POST	2 3/4" x 7" x 3/16" FORMED
HINGES	HEAVY DUTY <i>WITH GREASE ZERK</i> (THREE ON 54" OR HIGHER SIDES EXCEPT FOR BARN DOORS)
LATCHES	VERTICAL LIFT HANDLE
PAINT	INTERIOR/EXTERIOR SOLVENT BASED PRIME EXTERIOR SOLVENT BASED TOP COAT (COMPLETE PAINT OPTION AVAILABLE)



### STANDARD PAINT COLORS

BLACK



BUCKS® RED



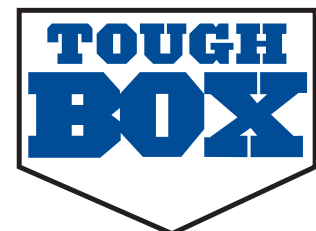
MACK GREEN



VALVOLINE BLUE



*Custom colors may result in increased cost and lead times.*



B046.2304

# CONTAINER OPTIONS

*Options may result in increased cost and lead times.*



FRONT WHEELS



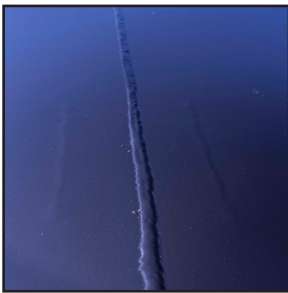
SIGN PLATES



TARP (many styles available)



BARN DOORS



FULLY WELDED

## STANDARD DIMENSIONS

*Containers can be manufactured to customer specified dimensions and may result in increased costs and lead times.*

<u>Yardage</u>	<u>Floor Length</u>	<u>Inside Height</u>	<u>Width</u>	<u>Estimated Weight</u>
10	12'	42"	96" Outside, 88" Inside	2800 lbs
12	12'	48"	96" Outside, 88" Inside	2900 lbs
15	14'	48"	96" Outside, 88" Inside	3300 lbs
20	22'	42"	96" Outside, 88" Inside	4300 lbs
25	22'	52"	96" Outside, 88" Inside	4700 lbs
30	22'	62"	96" Outside, 88" Inside	5000 lbs